

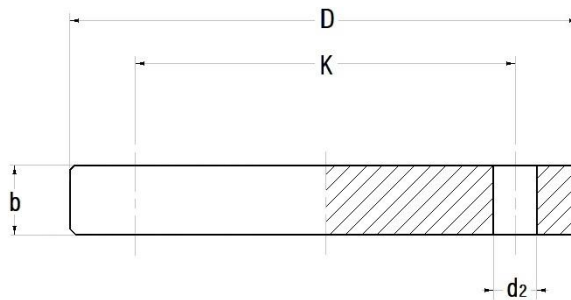


**Flangia cieca PP con anima metallica  
Standard ANSI 150**

Colore: Nero (o beige)  
Codice: DODBCA

**PP blind flange with steel core  
ANSI 150 standard**

Colour: Black (or beige)  
Code: DODBCA



d	Inch	D	b	k	d2	Viti Screws (nr.)	M (inch)	(Nm)**	Peso Weight (Kg)
20	1/2"	95	12	60,4	16,0	4	1/2"	15	0,22
25	3/4"	102	12	69,7	16,0	4	1/2"	15	0,24
32	1"	114	16	79,2	16,0	4	1/2"	15	0,39
40	1 1/4"	130	16	88,7	16,0	4	1/2"	25	0,53
50	1 1/2"	133	18	98,3	16,0	4	1/2"	35	0,56
63	2"	162	18	120,0	20,0	4	5/8"	35	0,84
75	2 1/2"	181	18	139,7	20,0	4	5/8"	40	1,07
90	3"	194	18	152,4	20,0	8	5/8"	35	1,10
110	4"	229	18	190,6	20,0	8	5/8"	40	1,57
160	6"	283	24	241,2	23,0	8	3/4"	60	2,35
200	8"	345	24	298,2	23,0	8	3/4"	70	3,39
250	10"	412	27	360,9	26,0	12	7/8"	100	6,20
315	12"	487	32	431,2	26,0	12	7/8"	110	12,60

**Note:**

- \* Valori di massima pressione in accordo a DIN 16962/5.  
Porre attenzione ai valori di massima pressione ammissibile per le guarnizioni usate.
- \*\* Momento di serraggio nominale.

**Notes:**

- \* Pressure rating values according to DIN 16962/5.  
Pay attention to the allowable pressures in relation to the used sealings.
- \*\* Nominal torque required to tighten bolts.