

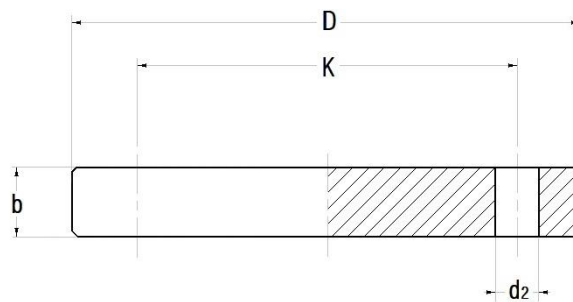


**Flangia cieca PP con anima metallica
Standard UNI/DIN PN 10/16**

Colore: Nero (o beige)
Codice: DODBCU

**PP blind flange with steel core
UNI/DIN PN 10/16**

Colour: Black (or beige)
Code: DODBCU



d	DN	D	b	K	d ₂	Viti Screws (nr.)	Viti Screws (mm)	Viti Screws (Nm)**	Peso Weight (Kg)
20	15	95	12	65	14	4	M12	15	0,29
25	20	105	12	75	14	4	M12	15	0,40
32	25	115	16	85	14	4	M12	15	0,56
40	32	140	16	100	18	4	M16	25	0,80
50	40	150	18	110	18	4	M16	35	0,94
63	50	165	18	125	18	4	M16	35	1,16
75	65	185	18	145	18	4	M16	40	1,64
90	80	200	20	160	18	8	M16	35	1,96
110	100	220	20	180	18	8	M16	40	2,80
160	150	285	24	240	22	8	M20	60	5,06
200	200	340	24	295	22	8	M20	70	7,80
250	250	409	30	350	22	12	M20	100	15,70
315	300	463	34	400	22	12	M20	110	25,68

Note:

- * Valori di massima pressione in accordo a DIN 16962/5.
Porre attenzione ai valori di massima pressione ammissibile per le guarnizioni usate.
- ** Momento di serraggio nominale.

Notes:

- * Pressure rating values according to DIN 16962/5.
Pay attention to the allowable pressures in relation to the used sealings.
- ** Nominal torque required to tighten bolts.