

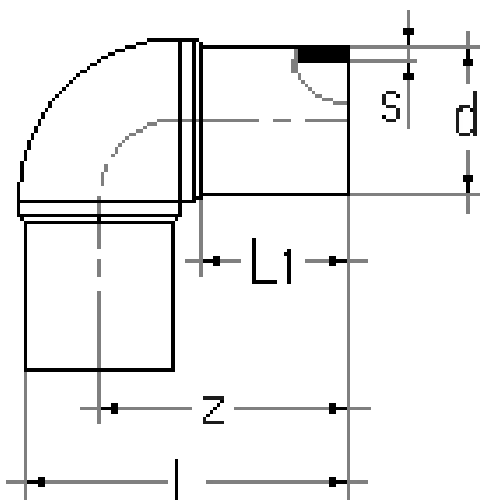


## Gomito 90° PE-HD

- Codice prodotto: DGBE
- Materiale: PE-HD 100, SDR 17-PN 10 o SDR 11-PN 16
- Colore: Nero
- Estremità codolo lungo per saldatura di testa

## HD-PE 90° elbow

- Product code: DGBE
- Material: HD-PE100, SDR 17-PN 10 or SDR 11-PN 16
- Color: Black
- Long spigot moulded butt fusion welding



d (mm)	z (mm)	L <sub>1</sub> (mm)	SDR 17 PN 10		SDR 11 PN 16	
			s (mm)	Peso Weight (Kg)	s (mm)	Peso (Kg)
32	73±1,5	55±1,5	-	-	-	-
40	80±1,5	60±1,5	-	-	-	-
50	93±1,5	68±1,5	-	-	-	-
63	109±1,5	78±1,5	-	-	-	-
75	128±1,5	87±1,5	-	-	-	-
90	130±1,5	84±1,5	-	-	-	-
110	149±1,5	91±1,5	-	-	-	-
125	168±1,5	101±2,0	-	-	-	-
140	170±1,5	94±1,5	-	-	-	-
160	186±2,0	101±2,0	-	-	-	-
180	226±2,0	106±2,0	-	-	-	-
200	217±2,0	118±2,0	-	-	-	-
225	238±2,5	121±2,5	-	-	-	-
250	307±4,0	180±4,0	14,2	6,45	22,8	9,23
280	340±4,0	200±4,0	15,9	9,00	25,5	12,74
315	370±4,0	210±4,0	17,9	12,00	28,7	18,30